

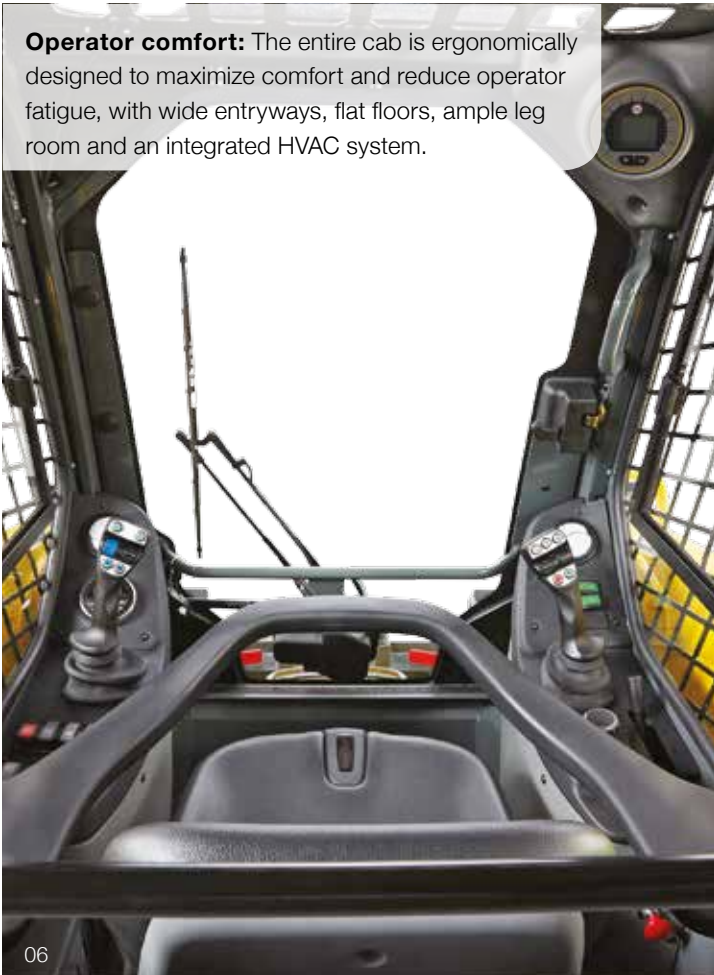
The SW28 Fertilizer Edition: the only skid steer of its kind.

Every detail has been engineered for the demands of moving fertilizer. And with the Nyalic anti-corrosion coating option, you can be more efficient today and for seasons to come.

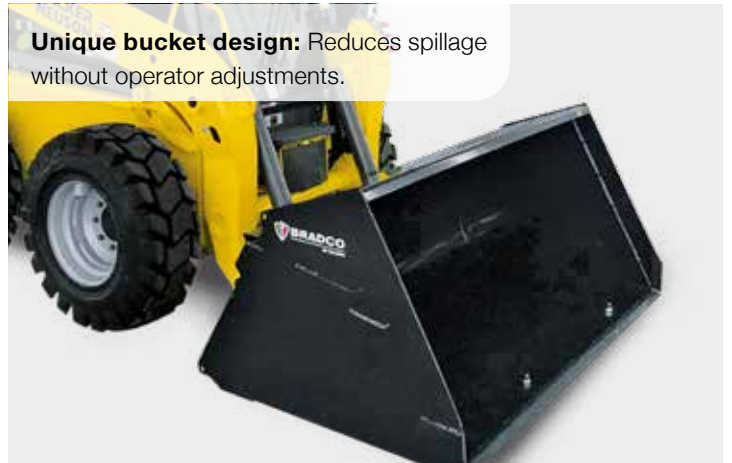
Built to haul more: Eight counterweights increase your lift capacity by adding 380 pounds to the rear of the machine.



Operator comfort: The entire cab is ergonomically designed to maximize comfort and reduce operator fatigue, with wide entryways, flat floors, ample leg room and an integrated HVAC system.



Unique bucket design: Reduces spillage without operator adjustments.



Severe-duty tires: Get speed, agility and durability with tires designed to withstand the toughest conditions.



Visibility and maneuverability: Cab-forward design with curved front glass gives the operator a better view, while the ISO pattern pilot-controlled joysticks offer smooth response and maximum control.



**Reaching higher.
Loading made easier.**

With an 11' 2" bucket hinge height and vertical lift, you get more reach at full height, ideal for dumping and loading trucks with high sides. That means loading hoppers and using pallet forks is easier and more efficient.

